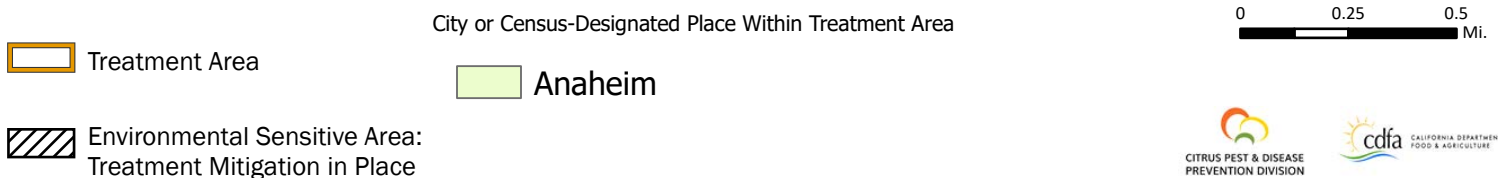
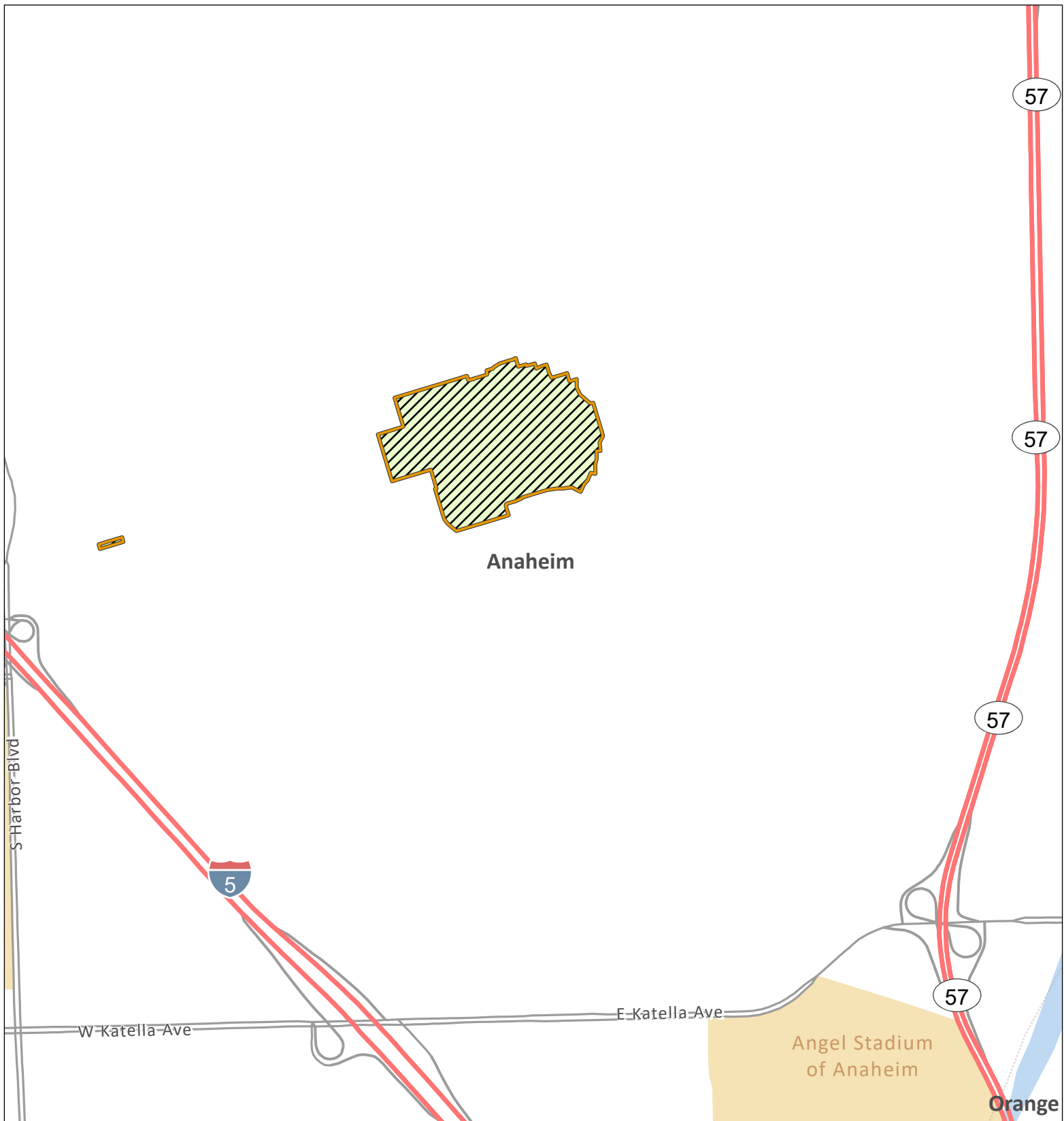


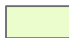


Huanglongbing / Asian Citrus Psyllid Program - Proclamation of an Emergency Program Map Orange County (2023-01) - Portion of Orange County - Part 1





Huanglongbing / Asian Citrus Psyllid Program - Proclamation of an Emergency Program Map Orange County (2023-01) - Portion of Orange County - Part 2

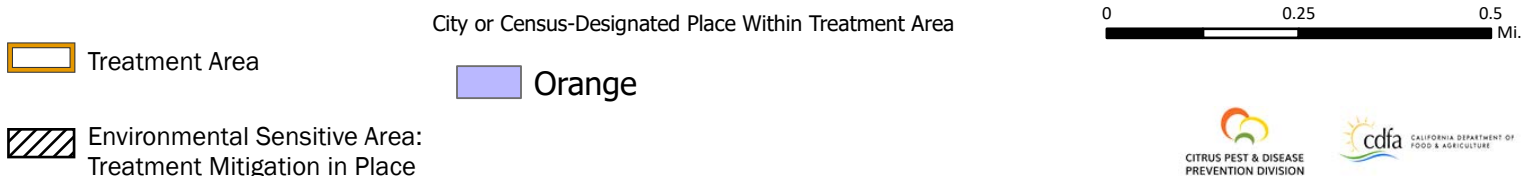
-  Treatment Area
-  Environmental Sensitive Area:
Treatment Mitigation in Place
-  City or Census-Designated Place Within Treatment Area
Anaheim

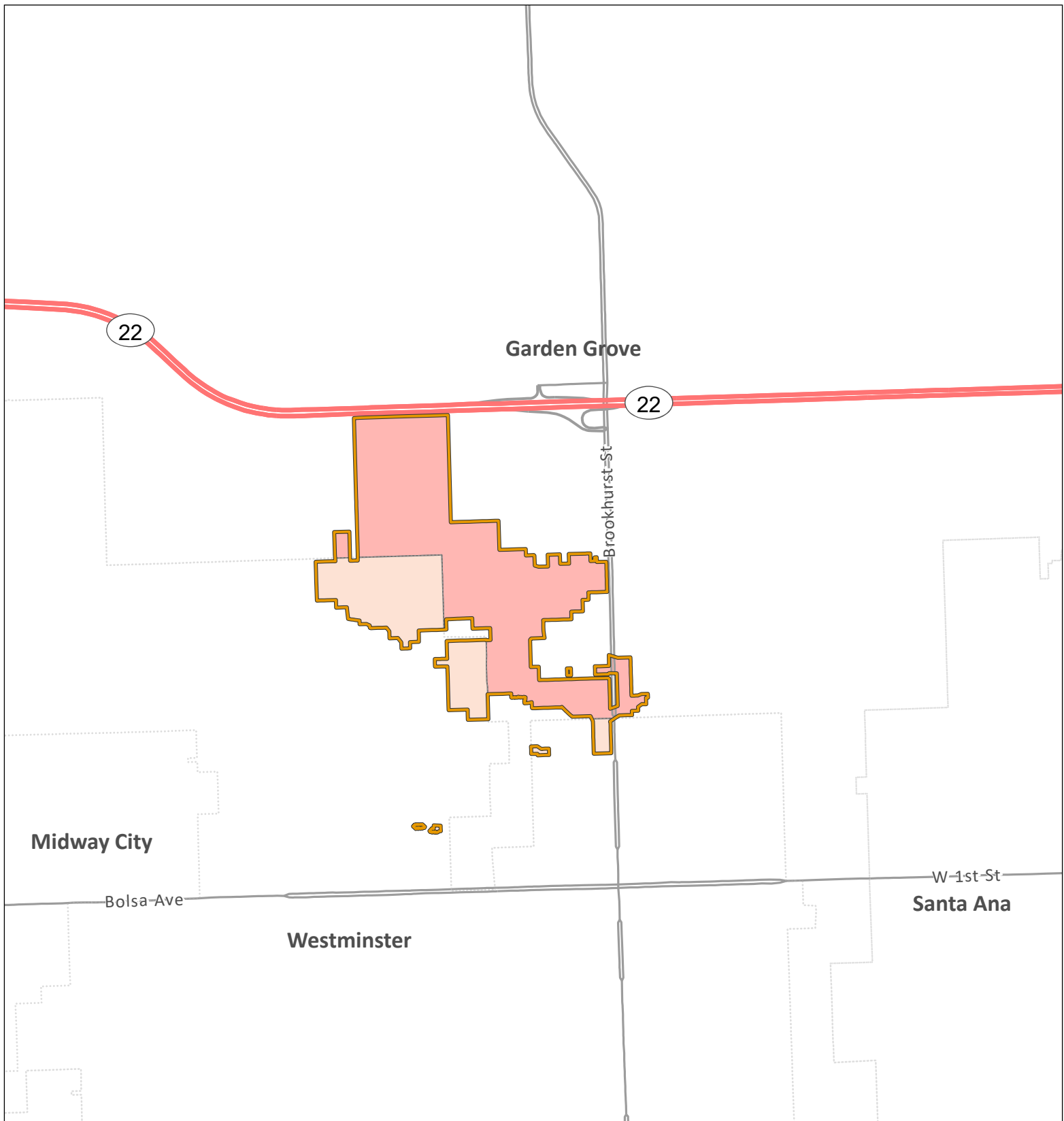
0 0.25 0.5
Mi.









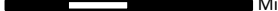
Huanglongbing / Asian Citrus Psyllid Program - Proclamation of an Emergency Program Map Orange County (2023-01) - Portion of Orange County - Part 3



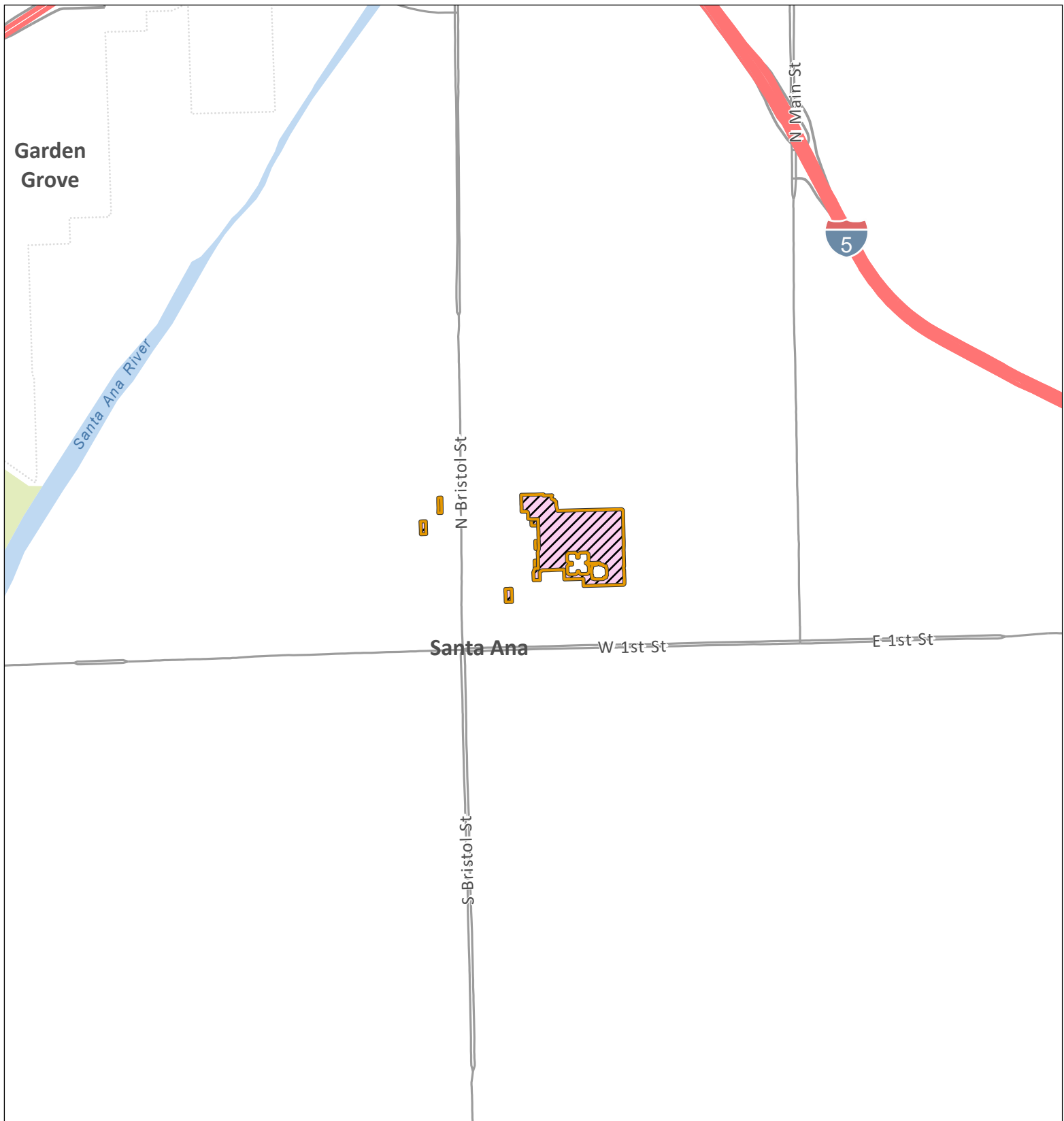


Huanglongbing / Asian Citrus Psyllid Program - Proclamation of an Emergency Program Map Orange County (2023-01) - Portion of Orange County - Part 4

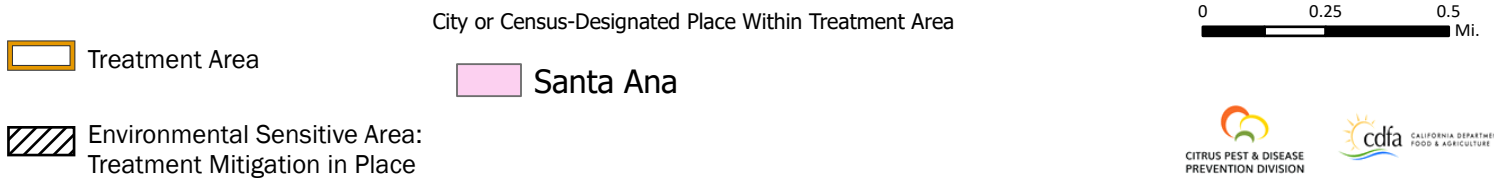
-  Treatment Area
-  Environmental Sensitive Area: Treatment Mitigation in Place
- City or Census-Designated Place Within Treatment Area
 -  Garden Grove
 -  Westminster

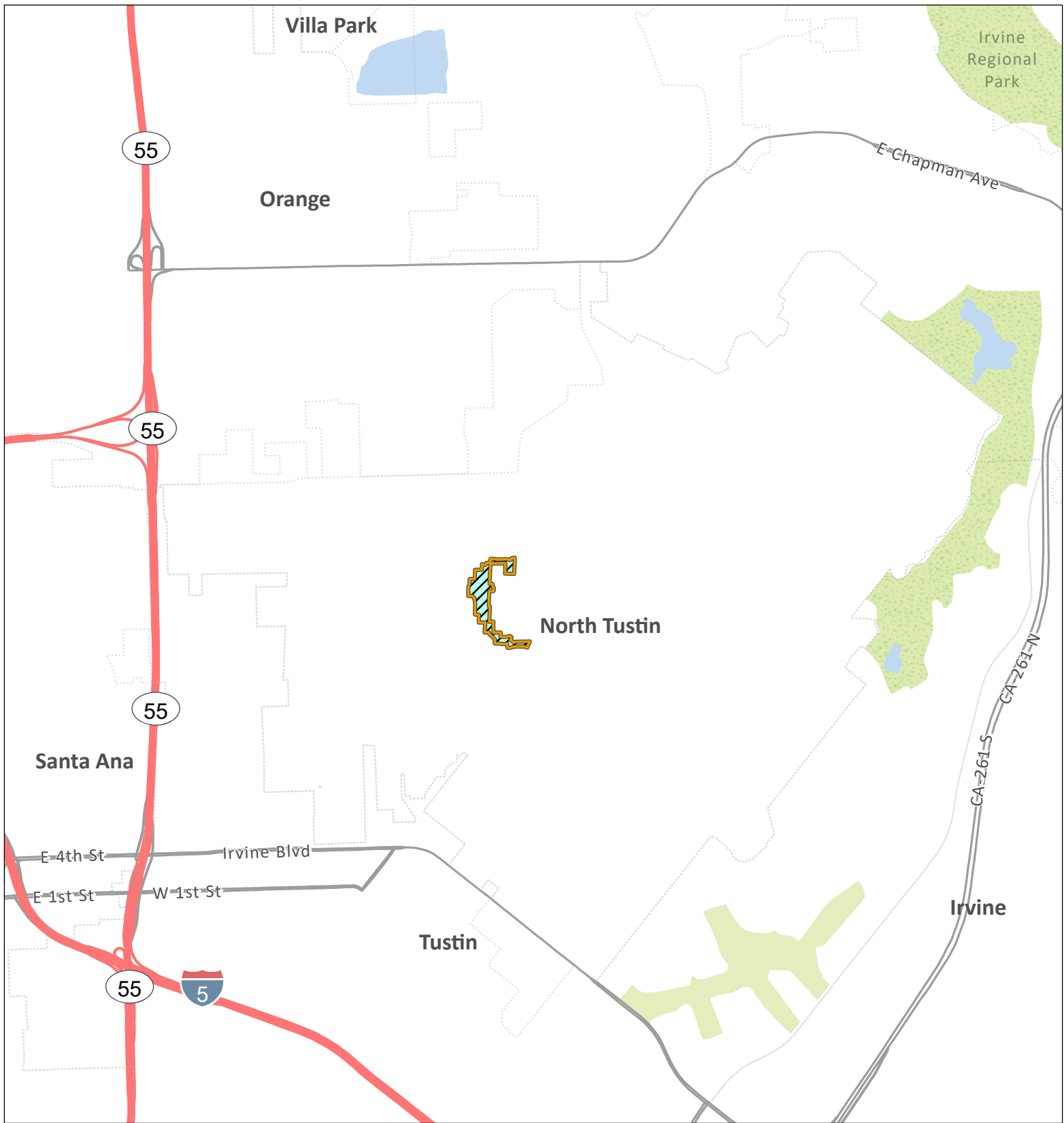
0 0.25 0.5
 Mi.





Huanglongbing / Asian Citrus Psyllid Program - Proclamation of an Emergency Program Map Orange County (2023-01) - Portion of Orange County - Part 5





Huanglongbing / Asian Citrus Psyllid Program - Proclamation of an Emergency Program Map Orange County (2023-01) - Portion of Orange County - Part 6

City or Census-Designated Place Within Treatment Area

0 0.45 0.9
Mi.

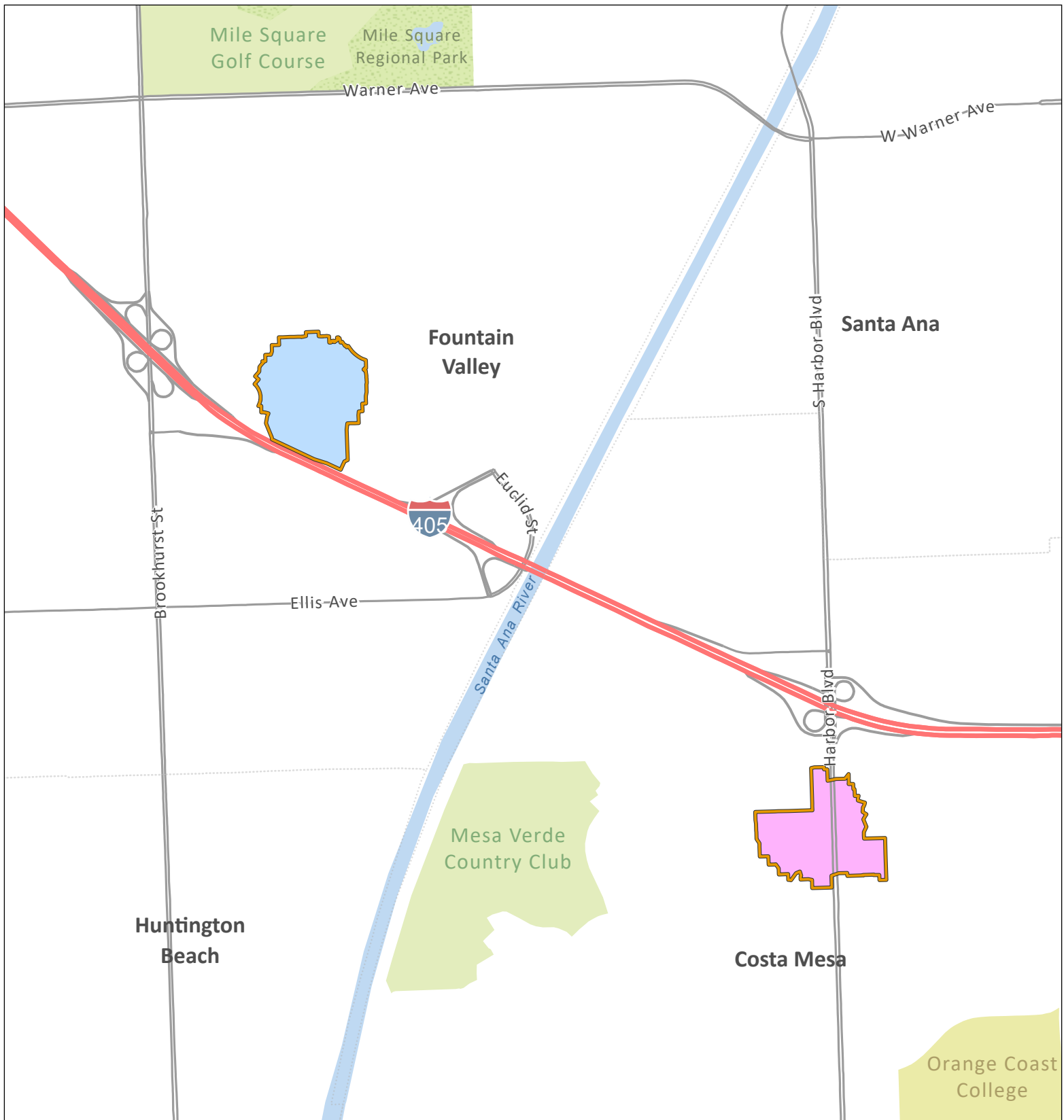
 Treatment Area

 North Tustin





 Environmental Sensitive Area:
Treatment Mitigation in Place


CITRUS PEST & DISEASE
PREVENTION DIVISION


cdfa CALIFORNIA DEPARTMENT OF
FOOD & AGRICULTURE



Huanglongbing / Asian Citrus Psyllid Program - Proclamation of an Emergency Program Map Orange County (2023-01) - Portion of Orange County - Part 7

-  Treatment Area
 -  Environmental Sensitive Area: Treatment Mitigation in Place
 -  Costa Mesa
 -  Fountain Valley
- City or Census-Designated Place Within Treatment Area

0 0.25 0.5
Mi.

